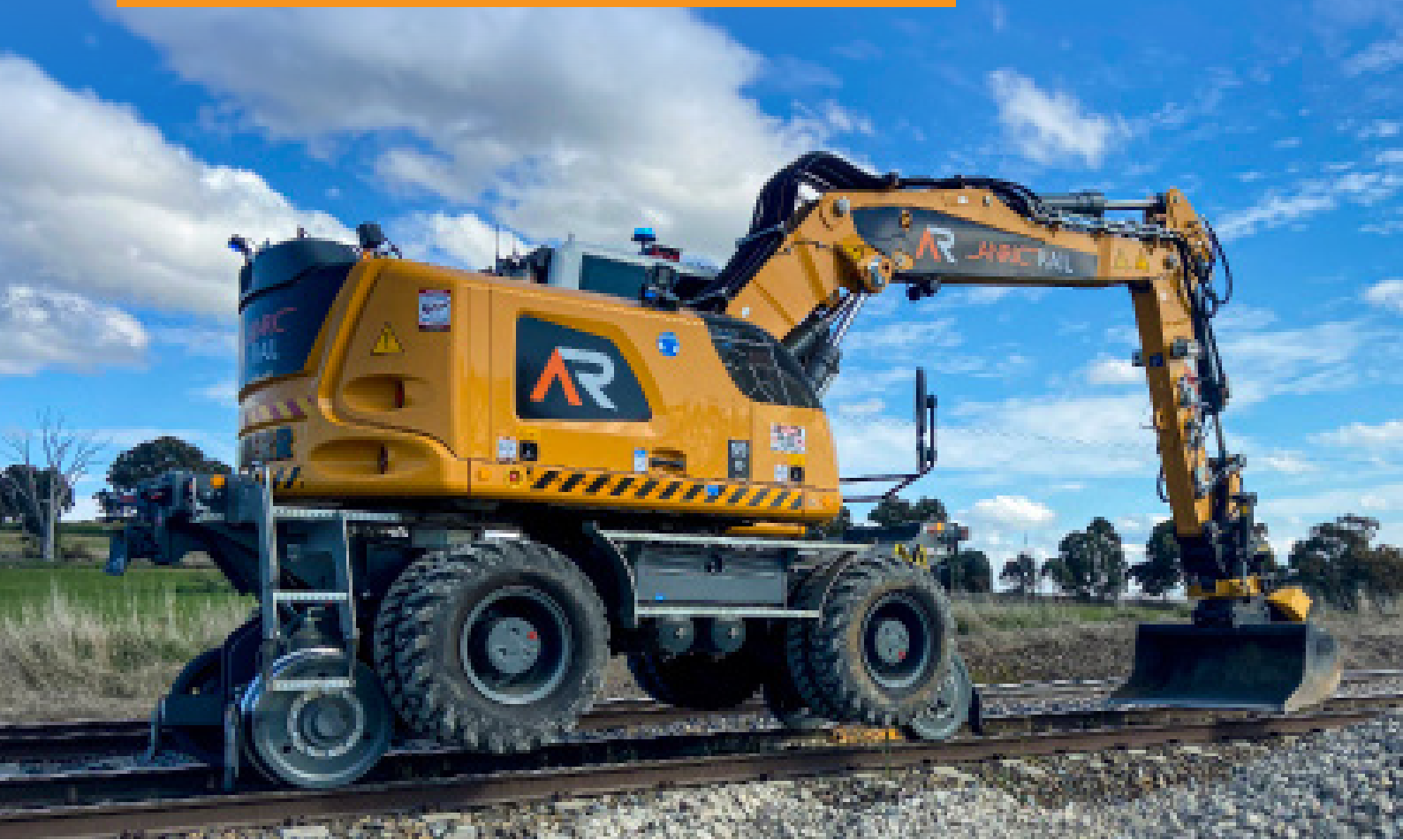


LIEBHERR A924 RAIL

# 24T WHEELED RRV

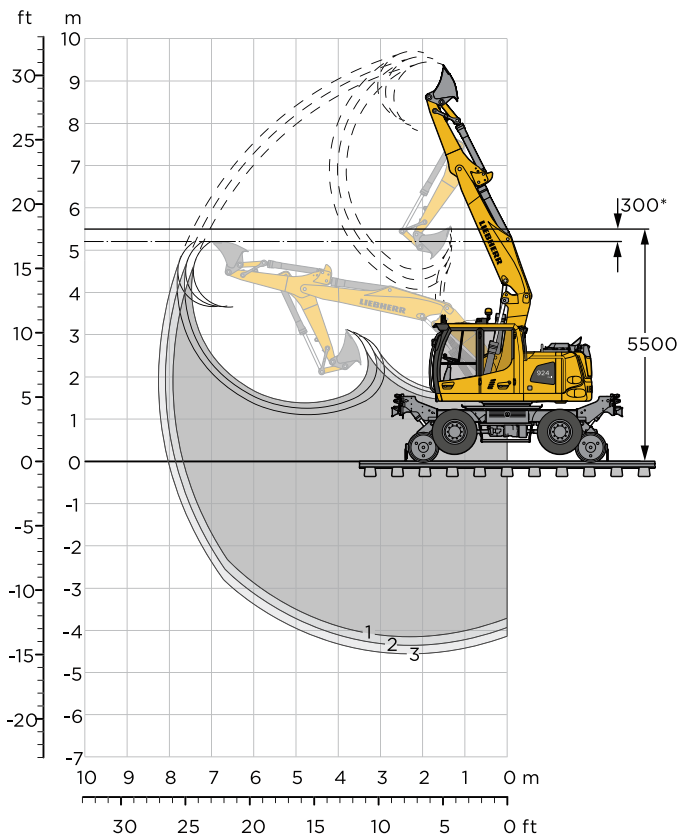


## DUAL-PURPOSE MACHINE FOR THE ROAD OR TRACKS.

The A 924 Rail is a dual-purpose machine that can be used on the road or on railway tracks. The rail gear is mounted on both sides of the undercarriage. When the machine is put on rail tracks, the rail guide is lowered one axle at a time until the internal wheels of the twin tyres make contact with the rail wheel and provide the friction connection for the travel drive.

- Euro 5 emissions rating
- Lifting performance exceeding a Liebherr 922 with 1t more lift
- Fitted with an (RCI) rated capacity indicator to assist in safe lifting
- Capable of both hi ride and standard low ride configuration, enabling the 924 to clear infrastructure like
- trail stops while they are in the 'up' position
- Double cab for offsider, protection officer or trainee etc
- Air system trailer braking for safer working ability and no environmental spills when disconnecting trailer like most other systems.

# WORKING SPECS



\* Safety distance to overhead wires

## CAPABILITIES

- Height and slew limiters
- Virtual wall capability
- Clears train stops
- Optimised dipper arm design for application under overhead electrical wiring with height and slew restrictor's
- Standard gauge capability
- 120 tonne towing capacity
- Superior lifting capacity's with in OEM rated capacity indicator

## SPECIFICATIONS

- Weight 25,000kg
- Engcon tilt rotator with integrated grab
- Huge range of attachments available
- Full view side/ rear camera system with large display
- 20 km/h step less speed control
- All rail wheel fail safe braking
- 8 wheel service braking

## RAIL NETWORKS APPROVED TO WORK ON:

- TfNSW
- John Holland
- ARTC
- MTS

## LIFT CAPACITIES:

with two-piece boom 5.05 m, tail radius 2,110 mm

### Stick 2.05 m

m	Undercarriage	3.0 m		4.5 m		6.0 m		m		
7.5	on rail			5.1	5.2*			4.6*	4.6*	4.5
	on tyres							4.8*	4.8*	
6.0	on rail	6.9*	6.9*	5.3	6.7*			3.4	3.8*	6.0
	on tyres			6.7*	6.7*			3.9*	3.9*	
4.5	on rail	9.0	10.3*	5.3	7.4*	3.4	6.1*	2.8	3.5*	6.8
	on tyres	9.9*	9.9*	6.9	7.3*	4.6	5.7	3.5*	3.5*	
3.0	on rail	8.8	10.9*	5.2	8.4*	3.4	6.4*	2.5	3.4*	7.2
	on tyres	10.6*	10.6*	6.8	8.3	4.6	5.6	3.4	3.4*	
1.5	on rail	8.7	12.6*	5.2	8.9*	3.3	6.6*	2.4	3.5*	7.2
	on tyres	11.7	12.4*	6.8	8.2	4.5	5.6	3.3	3.5*	
0	on rail	8.4	14.1*	4.9	9.0*	3.2	6.6*	2.5	3.9*	7.0
	on tyres	11.9	14.0*	6.7	8.3	4.4	5.4	3.4	3.8*	
-1.5	on rail	8.2	14.4*	4.7	9.2*	3.1	5.4*	2.9	4.3*	6.4
	on tyres	11.7	14.3*	6.5	8.2	4.2	5.3	3.8	4.4*	
-3.0	on rail	8.0	11.9*	4.6	5.8*			4.5	5.5*	4.6
	on tyres	11.5	12.8*	6.3	6.6*			5.0*	5.0*	

