

NEOTEC SKYRAILER C14

CRAWLER MEWP RRV



STANDARD/BROAD GAUGE SELF-PROPELLED MOBILE ELEVATED WORK PLATFORM

The SKYRAILER is designed to effortlessly move from the transport vehicle to the ontracking location using remote drive controls, ensuring optimal visibility and operator safety. Its distinctive crawler track offers exceptional access to rail without

the danger of getting stuck, and can navigate through various ground conditions, even with a 45% grade. Furthermore, the crawler track allows the machine to approach the rail at a perpendicular angle and quickly deploy the rail wheels.

WORKING SPECS



ON-RAIL PERFORMANCE

SKYRAILER features two driven and braked rail axles, fourwheel-drive and a maximum on-rail speed on 16km/h. The dedicated rail wheel service brake system features a skid and slip reduction system designed to bring the machine safely to a stop at all times. Once stopped the fail-safe rail wheel park brakes are applied and will easily hold the machine on any rail grade in Australia.

OFF-RAIL PERFORMANCE

Utilising a crawler track drive system, the SKYRAILER 400C.14 is able to climb over rails for on-tracking and manoeuvring around the work site. Able to negotiate almost any ground conditions up to 50% grade, SKYRAILER can travel from the transport vehicle to on-tracking location with ease, utilising remote drive controls to provide maximum visibility and safety to the operator.

EFFICIENCY

SKYRAILER allows the operator perform up to four operations simultaneously and reach anywhere in the working envelope quickly and efficiently. This is made possible by the 360 degree rotation and its ability to reach the 14m maximum working height in under 40 seconds, Once work is complete, the unique electronic return-home function allows the operator to safely rotate the turret back to the home position from anywhere in the 360 degree slew envelope.

SPECS	ON ROAD	ON RAIL
Working height	13.8 m	14 m
Platform height	11.8 m	12 m
Outreach	9 m	9 m
Fly boom angle	+70° / -70°	
Basket rotation	+90 / -90°	
Turret rotation	360° (Without measuring mast)	
Basket capacity	400 kg	
Basket size	1.8 x 0.93 m	
Width	2.5 m	
Length	7.8 m	
Height	2.6 m	2.6 m
Wheelbase	N/A	3.9 m
Travel speed	6 km/h	16 km/h
Working speed	0.8 km/h	6 km/h
Maximum gradient	1:18	1:2
Maximum tilt	5°	200mm cant
Wheels	Crawler Track	580mm cast steel
Driven wheels	2x Track	4
Braked wheels	N/A	4
Weight	From 12,000 kg	
Engine	Kubota V2403-M 45HP	

WORKING SPECS



SAFETY AND COMPLIANCE

SKYRAILER features a number of unique and innovative safety features that cannot be found on any other comparable machine.

The hydrostatically driven rail wheels feature a skid and slip reduction system that is integrated with the engine control and drive computer. The system ensures the machine is always able to brake and accelerate as safely as possible.

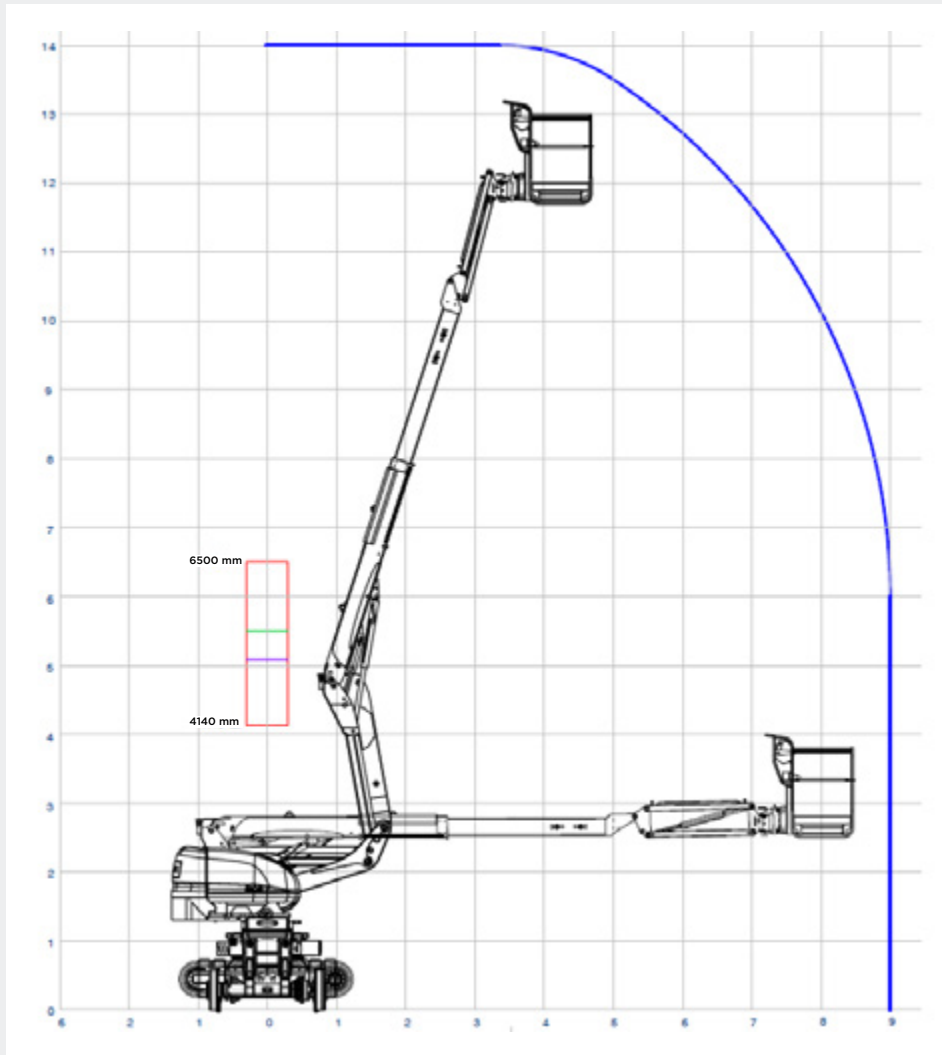
Unlike many other road-rail EWPs, SKYRAILER's rail wheel brake systems operate on all four rail wheels and use dedicated systems for service and park brake functions - Park brakes are not used in any service brake capacity.

A switchable bonding system allows the machine to operate under live overhead wires with a safe path to earth provided through the rail wheels.

SKYRAILER is fully compliant with AS1418 and AS7502 and carries nationwide Design Registration that includes on-rail use. Features such as dual beacons, derail skirts and ANZR-1 rail wheels are among over 20 modifications made to the UK and European versions.



WORKING ENVELOPE



OVERALL DIMENSIONS

