

COLMAR T10000HSC

4T CRAWLER RRV



A GAME CHANGER IN THE AUSTRALIAN RAIL SECTOR

First of its kind in the southern hemisphere, this state of the art technology is a game changer in the Australian rail sector.

What is the Colmar T10000HSC?

First of all, it is NOT a transformed conventional construction equipment, such as a crawler excavator. **It is a railway machine, conceived and developed to do track works**, and designed according to Rail Regulations and Safety Standards. It features an outstanding max lifting capacity on and off rail.

When the boom is fully retracted, this

machine is able to lift up to 15 tonne. This capacity is achievable thanks to the extendable counterweight that is fully retracted when the machine rides on rail or if operating within a more confined space such as in a tunnel.

The maximum lifting capacity offered when the boom is fully extended at 360° is 8 tonne and can be achieved at an impressive distance of 7-8 metres from the centre of the machine.

CRAWLER TRACKS ARE EXPANDABLE AND RETRACTABLE

This machine is equipped with a state of the art RCI (Rated Capacity Indicator) by GKD Technik, which monitors the effective load and its safety limit during every single degree of rotation of the turret. It means that at every single degree this safety device adjusts the safe load limit, so as to constantly use the highest possible lifting capacity as the turret turns. To operate like that, this GKD device accounts for other conditions, such as the boom extension, track grade and superelevation.

Crawler tracks of T10000HSC are expandable and retractable. This is a unique feature allowing the crawler tracks to be within the width of 2.500 mm, when the machine rides on rail and to extend that width to 3.800 mm when it moves on road or rough terrain. In the latter condition stability is greatly enhanced.

Separate service brakes are installed on both the two rail axles and pneumatic braking system for rail trailers totalling a total mass towing capacity of 80

tonnes. This machine can be used in conjunction with our fleet of 23t and 35t rail trailers.

The T10000HSC is capable of handling heavy accessories such as piling rigs used for setting up catenary infrastructures, weighing up to 7 tonne, expendable lifting jibs, ballast under cutters, rail croppers and many more attachments.

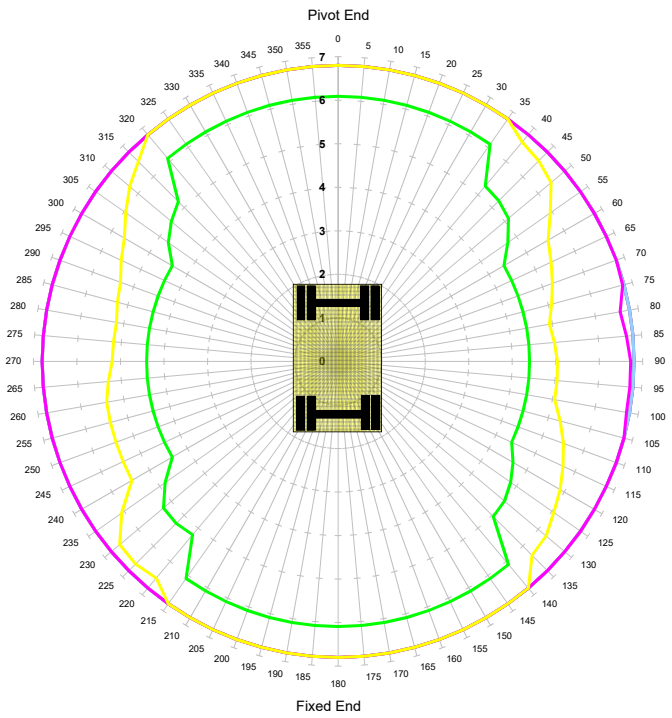
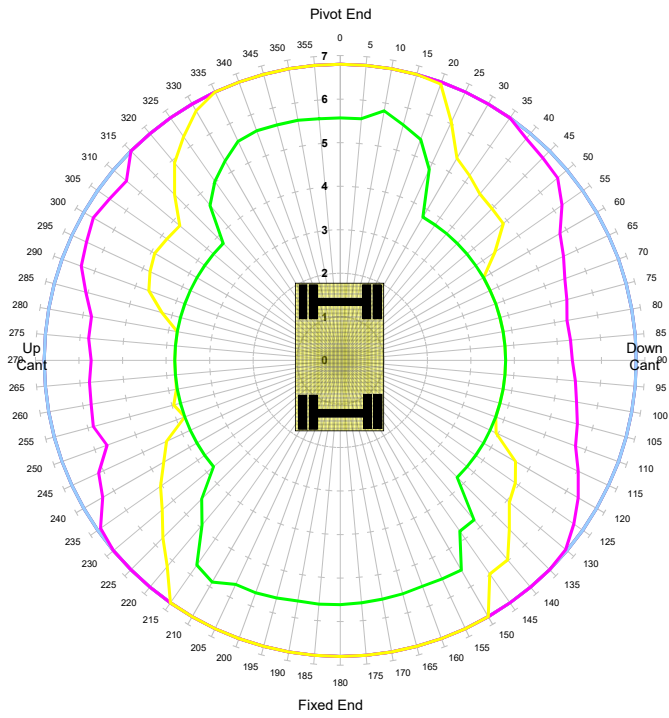
We have two Piling options; one is a MAIT low head height piling mast at only 4.5m with a 12m depth and a max torque of 140kn. The second unit is an extra low head height Piling rig at 2.1m with a reach of 16m in depth. Both these units will be able to drill anywhere including on platforms due to its ability to get under awnings or under bridges thereby removing the need to get machinery onto the platform. These units will provide massive versatility and confidence that partnering with us will ensure your next job is on time and to plan.



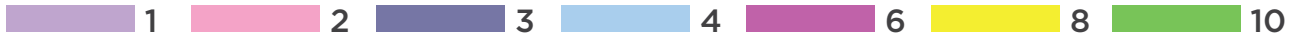
WORKING SPECS

LOCKED RAIL CANT -50MM

ROAD - TRACKS EXTENDED

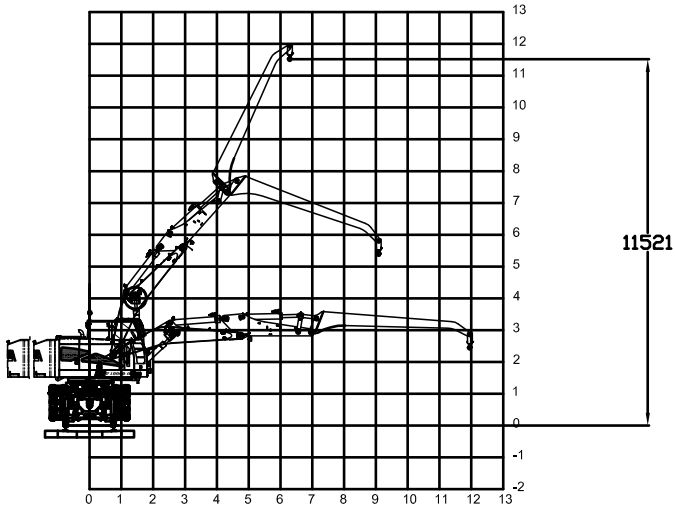


UNITS IN TONNES



WORKING SPECS

T10000HSC WITH
RHINO HORN 5M



T10000HSC WITH
RHINO HORN 3M

