

NEOTEC D14

WHEELED MEWP RRV



POWERFUL YET ECO-FRIENDLY RAILWAY LIFTING SOLUTION

The Neotec D14 represents the pinnacle of innovation in the realm of Sky Railers, designed as an evolution of the W16 model. This advanced machine boasts a hybrid power system that integrates a fully autonomous electric battery with a robust 45kw diesel engine. This is a significant upgrade from the standard 16kw engines found in its competitors, ensuring the D14 remains free from the common overheating issues, especially when navigating steep tunnel gradients.

As an autonomous system, the D14 offers unparalleled operational flexibility. It can seamlessly switch between battery and diesel power, enhancing efficiency and extending

its working times. The regenerative system captures energy during operation, contributing to the recharging of the battery, further amplifying its work endurance.

In travel mode, the D14's working envelope surpasses that of any other machine in its class, providing operators with greater reach and flexibility. The enhanced drive sensitivity ensures precise control, crucial for executing intricate tasks in challenging positions. With a substantial basket capacity of 450kg, the D14 guarantees not only safety but also ease of maneuverability across various track conditions, setting a new standard for Sky Railer performance and reliability.

KEY BENEFITS

The D14 boasts a trio of steering modes—Crab, Standard, and 4-Wheel—making it exceptionally easy to mount and dismount the tracks. It's designed for extended travel on and off rail, equipped with a Stage 5 diesel engine

and an electric mode for near-silent operation. The inclusion of an onboard generator provides workers with convenient 240v power for hand tools right in the basket, eliminating the need for cumbersome external power sources.

HYBRID

Electric Motor: 10-17 kW

Charge time:

- On power supply = ~5h / 230V 10A
- With the engine = ~3h

Diesel engine: Perkins Stage V

Power: 45 kW

Cooling: Liquid

Tension: 12 V Starting the engine

Diesel tank: 52L

Consumption: 4L / hour

+ REDUCTION OF CO2 EMISSIONS

+ "FLEXIBLE" HYBRID MODES

+ COMPACT RAIL SOLUTION

+ EASILY & QUICKLY ON/OFF TRACK

+ 6-8 HOURS WORK ON SINGLE CHARGE

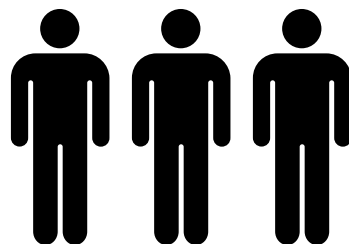
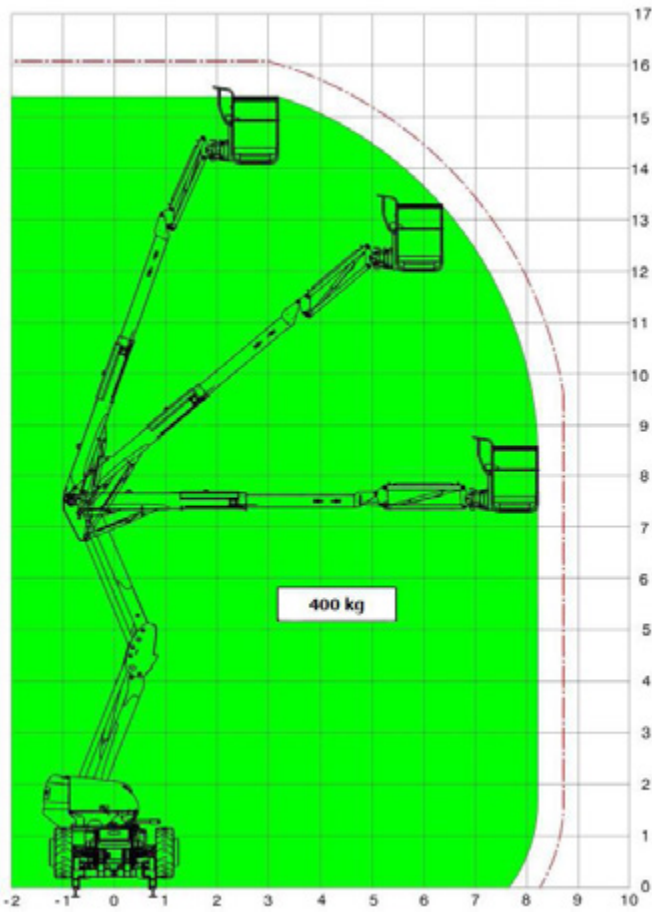
+ LESS FUEL NEEDED



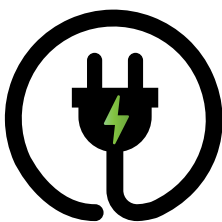
WORKING SPECS

0 - 100MM CANT

150MM CANT



**THREE
PERSON
CAPACITY**



**ON BOARD
GENERATOR 240V**

OVERALL DIMENSIONS

